

# Cal-Van TOOLS

A Leader in Specialty Hand Tools Design and Manufacturing  
Quality and Innovation for Over 65 Years

2012 Product Catalog



750 - 22 PIECE ALTERNATOR PULLEY SERVICE KIT



39300 - THREE VALVE FORD TRITON INSERT KIT



76 - RELAY CIRCUIT PRO



155 - IN LINE 4.75 MM BUBBLE FLARING TOOL



95200, 95300, 95400 - IN LINE DOWELL PULLER



154, 161, 164 - IN LINE FLARING TOOL



82800 - TUBE SERVICE KIT



36700 TWO-IN-ONE S-CAM BRAKE TOOL



90100 - HUB TOOL

CAL-VAN TOOLS • AUGUST • 2012 • A YEAR OF INNOVATION

# Table of Contents

<b>Engine</b> .....	<b>6</b>
38800 Harmonic Balancer Installer .....	6
843 Oxygen Sensor Wrench .....	6
38900 Ford Triton Spark Plug Thread Repair Kit .....	6
39100 Ford Triton Spark Plug Extractor .....	6
39200 Ford Triton Spark Plug Porcelain Extractor .....	7
39300 Three Valve Ford Triton Insert Kit.....	7
880 Cylinder Head Rethreader Kit.....	7
753 13 Piece Alternator Pulley Service Kit .....	8
750 22 Piece Alternator Pulley Service Kit .....	9
683 Master Disconnect Set .....	10
684 Line Quick Disconnect Tools .....	10
230TNZ Fuel Line Disconnect Tools.....	10
244TNZ Heater Hose Disc 4 Pc Set.....	10
731 Flexible Hose Clamp Pliers .....	11
737 Flexible Hose Pinch-Off Pliers.....	11
16000 Radiator Hose Pinch Off Pliers.....	11
16500 Heavy Duty Pinch Off Pliers .....	11
768 Grinding & Lapping Compound .....	11
360 Engine Cylinder Hone, 2"- 7" .....	12
32300 Adjustable Cylinder Hone Deglazer, 2"- 5" .....	12
888, 889 Spark Plug Speed Stick.....	12
641 Piston Ring Compressor Set .....	12
735 Euro Stretch Belt Installation Tool.....	13
736 Stretch Belt Installation Tool .....	13
734 The Grabber Serpentine Belt Tool .....	13
52300 Seal Puller .....	13
<b>Suspension</b> .....	<b>14</b>
186 Pitman Arm Puller.....	14
526 Flange Type Axle & Front Wheel Hub Puller .....	14
94800 Hub Puller.....	14
91800 Rear Bearing Puller .....	15
946 Inner Tie Rod Removal Tool .....	15
510 Coil Spring Compressor .....	15
512 MacPherson Strut Tool .....	16
513 Master MacPherson Strut Tool Set.....	16
91000 Coil Spring Clamps.....	16
90200 Master Spring Compressor Set .....	17
805 Magnetic Wheel Weight Tool .....	17
90100 Hub Tool .....	17
<b>Electrical / Battery</b> .....	<b>18</b>
554 Camo Pac.....	18
556 Marine.....	18
555 Camo Pro Pac .....	19
558 Mini-Jumper.....	19
551 Battery Post & Clamp Cleaner.....	20
553 Heavy Duty Battery Post & Terminal End Brush.....	20
549 Battery Terminal Clamp Spreader .....	20
547 Battery Terminal Bolt Pliers .....	20

76 Relay Circuit Pro.....	21
67 Power On Circuit Tester.....	21
70 Heavy Duty Circuit Tester.....	21
145 Spark Plug Boot Pliers.....	22
825 Spark Plug Gap Gauge.....	22
693 Ignition Point Files.....	22
64 High Energy Ignition Tester.....	23
135 Ford Radio Remover Tool.....	23
<b>Filter Wrenches.....</b>	<b>24</b>
291 Truck & Tractor Oil Filter Pliers.....	24
297, 298 Oil Filter Pliers.....	24
302 Adjustable Oil Filter Pliers.....	24
785, 788, 789, 791 Cup Type Oil Filter Wrenches.....	25
784ALUM, 786ALUM Aluminum Diecast Filter Wrenches.....	25
967 4-In-1 Swivel Oil Filter Wrench.....	26
989, 991 Swivel Truck Oil Filter Wrenches.....	26
891, 892, 893 Heavy Duty Truck Oil Filter Wrenches.....	26
993, 994, 995, 999 Swivel Oil Filter Wrenches.....	26
803 Deluxe Strap Oil Filter Wrench.....	27
814 All Size Oil Filter Wrench.....	27
25200 Ford Fuel Filter Wrench.....	27
987 Heavy Duty Three Legged Oil Filter Wrench.....	27
988 Three Legged Oil Filter Wrench.....	27
<b>Brake.....</b>	<b>28</b>
154, 161, 164 In-Line Flaring Tool.....	28
155 In Line 4.75mm Bubble Flaring Tool Kit.....	28
156 Bubble / ISO In-Line Tube Flaring Kit.....	28
82800 Tube Service Kit.....	29
82900 Double & Bubble Flare Tool.....	29
151 Mini Tubing Cutter.....	30
82700 Metric Bubble Flaring Tool Kit.....	30
36700 Two-In-One S-Cam Brake Tool.....	30
153 Metric Double Flaring Tool.....	30
163 Double Flaring Tool.....	31
162 Single Flaring Tool.....	31
758 Heavy Duty Tubing Bender.....	31
700 Universal Brake Pad Spreader.....	31
702 Disc Brake Pad Spreader.....	31
27100 Brake Shoe Spreader.....	31
357 Disc Brake & Small Engine Hone.....	32
358 Disc Brake & Caliper Hone.....	32
362 Adjustable Brake Cylinder Hone.....	32
762 Sub Compact Brake Cylinder Hone.....	32
247 One Man Brake Bleeder.....	33
722 Disc Brake Piston Remover.....	33
855 Brake Bleeder Tank.....	33
30900 Brake Spring Tool.....	33
32900 Master Cylinder Brake Bleeder.....	33

<b>General</b> .....	<b>34</b>
95200, 95300, 95400 In-Line Dowel Pin Puller .....	34
438 Spiral Screw Extractor Set.....	34
441 Fluted Screw Extractor Set.....	34
450 Tight Access Drive Wrench.....	35
183 Nut Splitter.....	35
19 Stud Remover.....	35
503 Bearing Splitter .....	35
912 Extra Long Torx Screwdriver Set .....	36
917 Tamper-Proof Extra Long Torx Screwdriver Set .....	36
913 Tamper Resistant Square Drive Torx Bit Set .....	36
914 Tamper Resistant Square Drive Torx Bit Set .....	36
920 Torx Socket Sets.....	36
932 Torx Socket Set w/ Holder (Internal).....	36
933 Master Torx Bit Set .....	37
100 Master Finger Bit Driver Set .....	37
104-03 Finger Socket Driver 3-Pack .....	37
108 Mini Finger Ratchet .....	37
109 Finger Ratchet (3/8" Drive).....	37
906 Finger Bit Driver.....	37
482 90 Degree Gearless Angle Drive (1/4") .....	38
483 90 Degree Gearless Angle Drive (3/8") .....	38
485 45 Degree Gearless Angle Drive (1/4") .....	38
486 45 Degree Gearless Angle Drive (3/8") .....	38
488 Twin Spin Drive Converter (1/4"- 3/8").....	38
489 Twin Spin Drive Converter (3/8"- 1/2").....	38
48100 Master Ratchet Accessory Set .....	38
480 1/2" Breaker Bar .....	38
341-SAE, 341-MET, 341-10 Mini-Hex Keys .....	39
81000 Hinge Pin Puller.....	39
25 2" Round Telescoping Mirror .....	40
27 Telescoping Inspection Mirror.....	40
226 Adjustable Magnetic Pickup Tool .....	40
287 Telescoping Magnetic Pickup Tool.....	40
627 Hook Scribe .....	40
668 Pistol Grip LED Lighted Screwdriver .....	40
351 All Purpose Awl.....	41
264 Parts Cleaning Brush.....	41
878 Ratcheting Chain Wrench.....	41
767 Ratcheting Tubing / PVC Cutter .....	41
881SET Speed Stick Set.....	41
147 Snap Ring Pliers Set .....	42
148 Snap Ring Pliers (Internal) .....	42
149 Snap Ring Pliers (External) .....	42
268 Lock Ring & Snap Ring Pliers .....	42
1015 Snap Ring Pliers Set .....	42
1016 Snap Ring Pliers Set .....	42
794 Drive Light .....	43
795 Power Flip Flashlight .....	43
626 Inside & Outside Caliper.....	43
119 Magnetic Bit Holder .....	43

<b>Body / Scrapers .....</b>	<b>44</b>
26 18" Professional Windshield Knife.....	44
17 24" Urethane Cut Out Knife.....	44
53500 Cold Knife.....	44
55 Body Clip Pliers.....	44
49500 Body Dent & Seal Puller.....	44
701 Mini Scraper.....	45
717 Extended Razor Blade Scraper.....	45
747 Scraper Mate Sticker Remover.....	45
52600 Scraper Set.....	45
536-700 Mini Razor Knife.....	46
536 Monster Knife.....	46
527-100 Extra Long Razor Blades.....	46
709 Poly Guard Blades.....	46
711 Razor Blades.....	46
141 Bolstered Wood Handle Putty Knife / Scraper.....	47
136 Putty Knife / Scraper Set.....	47
125 Upholstery Tool Set.....	47
53 Upholstery Clip Remover.....	47
38 Rear View Mirror Hex Key Set.....	47
 <b>Pullers.....</b>	 <b>48</b>
187 Steering Wheel Puller.....	48
498 Flange Type Axle Puller.....	48
31 Pilot Bearing Puller.....	48
28 Pilot Bearing Puller w/Slide Hammer.....	48
189 Harmonic Balancer Puller.....	49
493 Low Profile Seal Puller.....	49
49600 Seal Puller.....	49
237, 240, 941, 942, 944 Two-Jaw Pullers.....	50
134, 951, 952, 953, 954 Two & Three Jaw Combination Pullers.....	50
 <b>Under-Car.....</b>	 <b>51</b>
764 Exhaust Tail Pipe Cutter.....	51
780 Exhaust Manifold Socket Set.....	51
 <b>Merchandisers .....</b>	 <b>52</b>
341-10 Mini-Hex Keys - 10 Pack Merchandiser.....	52
536700-30 Mini Razor Knife - 30 Pack Merchandiser.....	52
701-30, 701-50 Mini-Scraper Merchandisers.....	52
824 100 Piece Spark Plug Gap Gauge Merchandiser.....	52
90620, 90630 Finger Bit Driver Merchandisers.....	53
536-4 Monster Knife 4-Pack Merchandiser.....	53

## 38800 Harmonic Balancer Installer

- A must to properly install harmonic balancers or drive pulleys that are pressed on one or two groove pulleys on the crankshaft.
- Instructions Included
- Use with Cal Van 189, Harmonic Balancer Puller / Remover



## 843 Oxygen Sensor Wrench

- Flex head offers essential clearance for removal or installation of oxygen sensors when it is positioned upward and inward to the floorboard or when leverage is needed around an exhaust pipe.
- Designed for all oxygen sensors with 7/8" hex.
- Works on: Ford Contours, 4.6L and 5.4L Ford Modular engines
- 7/8" and 22mm knock sensors used on mid-sized trucks, SUVs and vans.



## 38900 Ford Triton Spark Plug Thread Repair Kit

- Designed to aide in repairing Ford Modular Cylinders Heads.
- A quality, foolproof repair system that is cost effective and fast.
- High quality oversized steel alloy insert will repair other inserts that fail and has no ill effects from heat transfer.
- Total labor time as short as 25 mins..
- Works with Ford Triton Motors (96' to 03')
- 389-100 Replacement Inserts
- Patented



## 39100 Ford Triton Spark Plug Extractor

- This new item works to extract frozen and broken off spark plug sleeves in 2004 to present Ford Triton Engines.
- Specially machined guide works with extra long tap and extractor to make sure the job is done right.
- This is a heavily requested application that will only get more popular



## 39200 Ford Triton Spark Plug Porcelain Extractor

This Tool is used to extract the broken porcelain from broken spark plugs in 2003 to current Ford Triton Engines.

- In some cases the porcelain will break off in the sleeve and will need to be extracted in order for the 39100 to function effectively.
- Unlike other tools that tell you to push the porcelain through the sleeve (Ford says specifically not to do this), this tool adheres to the porcelain using a special perma-bond and then allows a user to extract the broken porcelain from the sleeve.



## 39300 Three Valve Ford Triton Insert Kit

The Three Valve Ford Triton Insert Kit is designed to aid in the repair of, 3-valve 5.4 L and 6.8 L engines built before 10/9/07 and 3-valve 4.6 L engines built before 11/30/07 found in many 2004–2008 Ford, Lincoln and Mercury. In above models, the spark plug tends to break off in the cylinder head during maintenance. If this problem is not repaired properly, it can result in damaged or unusable spark plug threads and in extreme cases the possibility of a spark plug blow out. This kit will allow the user, with simple step by step instructions, to repair those damaged threads or blowouts in 30 minutes or less per cylinder.



## 880 Cylinder Head Rethreader Kit

- Solid steel inserts replace damaged threads on aluminum heads.
- Kit Includes: No. 880-1 Tap and Reamer, 3/16" Hex Head No. 880-2 Insert, 3/8" (9.5mm) Long No. 880-3 Insert, 7/16" (11mm) Long No. 880-4 Insert, 1/2" (13mm) Long No. 880-5 Insert, 3/4" (19mm) Long





*An Alternator Decoupler Pulley kit for servicing late model vehicles with OWC (One-Way-Clutch) and OAD (Overrunning Alternator Decoupler) pulleys.*



## **753 13 Piece Alternator Pulley Service Kit**

- 13 Piece kit used to service many popular late model vehicles with both OWC and OAD alternator pulleys.
- To remove these pulleys the shaft coming from alternator needs to be locked in place while the pulley is spun either clockwise or counter clockwise, depending on the manufacturer. The opposite would be used in installation.
- Covers most US, Euro, makes and models with both on and off vehicle applications: Audi, BMW, Buick, Cadillac, Chevrolet, Chrysler, Citroen, Dodge, Fiat, Ford, Honda, Lexus, Mercury, Mercedes-Benz, Pontiac, Porsche, Saturn, Scion, Toyota, VW.



**750 22 Piece Alternator Pulley Service Kit**

- This 22 piece kit eliminates the need to shop around for hard-to-find OWC and OAD tools and reduces service bay downtime that can take a toll on dealer profits. Stored in one complete case for users convenience.
- To remove these pulleys the shaft coming from alternator needs to be locked in place while the pulley is spun either clockwise or counter clockwise, depending on the manufacturer. The opposite would be used in installation.
- Covers most US, Euro, makes and models with both on and off vehicle applications: Audi, BMW, Buick, Cadillac, Chevrolet, Chrysler, Citroen, Dodge, Fiat, Ford, Honda, Lexus, Mercury, Mercedes-Benz, Pontiac, Porsche, Saturn, Scion, Toyota, VW.



*A comprehensive Alternator Decoupler Pulley kit for servicing late model vehicles with OWC (One-Way-Clutch) and OAD (Overrunning Alternator Decoupler) pulleys.*



## 683 Master Disconnect Set

- The most complete disconnect set on the market.
- Comes in a heavy duty case for easy access and easy storage.
- No more random disconnect tools laying around to be lost all your disconnect needs in one place.



## 684 Line Quick Disconnect Tools

- For spring lock coupling/ snap lock air conditioning lines, late model fuel lines and automatic transmission cooler lines found on GM, Ford, and Chrysler vehicles.
- Six popular sizes fit the following tubing O.D. sizes: 5/16-in.(8mm), 3/8-in.(9mm), 1/2-in.(13mm), 5/8-in.(16mm), 3/4-in.(19mm), and 7/8-in.(22mm). Also works on Ford transmission and radiator cooler lines.
- Color coded and stamped with tool size for quick identification.



## 230TNZ Fuel Line Disconnect Tools

- These fuel line service tools were designed to remove stubborn fuel lines from today's cars & trucks.
- Made of aircraft grade aluminum. This makes them very light and strong.
- Opening is 3/4" and tapers down to 1/8". This allows a universal application with just two tools.
- Low profile design provides access into the smallest places with the most force available to remove the worst nightmares!
- Patent Pending.



## 244TNZ Heater Hose Disc 4 Pc Set

- Thicker than most hose disconnect tools, so you don't get hung up or break the connector.
- 40 degree offset designed for jobs up against the firewall or in tight spaces.
- Similar tools may have handles that get in the way, our low profile design does not.
- Set of four will cover all your quick connect hose needs.
- Patent Pending.



## 731 Flexible Hose Clamp Pliers

- Features flex tubing to help get at tough clamp locations.
- Flex tubing will hold shape making fastening to clamp easier.
- Ratcheting pistol grip makes clamp compression easy, and holds clamp in one position.
- Broad range to fit most hose clamps.



## 737 Flexible Hose Pinch-Off Pliers

- Hose clamp tool reaches to the tightest of places where radiator hoses are located without having to guide with your hand.
- Flexible rigid shaft holds position, and helps to obtain those difficult positions.
- Locking arm to keep hoses locked in open position.
- Fine tooth ratchet locks into place, and works on the largest in truck/tractor application.



## 16000 Radiator Hose Pinch Off Pliers

- Eliminates the need to drain systems when servicing cooling systems.
- Pliers squeeze heater or radiator hoses shut and jaws swivel for parallel clamping.
- Automatic locking ratchet.
- May also be used to pinch off vacuum lines and fuel lines.
- Caution: Not for use on wire reinforced radiator hoses.



## 16500 Heavy Duty Pinch Off Pliers

- Eliminates the need to drain systems when servicing cooling systems.
- Pliers squeeze heater or radiator hoses shut and jaws swivel for parallel clamping.
- Automatic locking ratchet.
- May also be used to pinch off vacuum lines and fuel lines.
- For use on wire reinforced radiator hoses.



## 768 Grinding & Lapping Compound

- Coarse for Roughing, Fine for Finishing



## 360 Engine Cylinder Hone, 2"- 7"

- Extremely versatile hone for 2-in. to 7-in. (56mm-178mm) diameter cylinders found on cars, trucks, buses, tractors, industrial engines and small air cooled engines.
- Adjustable to all diameters within its range.
- Flexible shaft, controlled spring action; spread control limiters are features that contribute to faster changing from one cylinder to another with the fastest cutting action.
- Includes with 4-in. (102mm) Medium Grit Stones.
- Operated with high or low speed drill.

Replacement Stones:

**361** Replacement Stone Medium Grit, 220-240 Grit, Set of three

**361-01** Replacement Stone Fine Grit, 400 Grit, Set of three

**361-02** Replacement Stone Coarse Grit, 100 Grit, Set of three



## 32300 Adjustable Cylinder Hone Deglazer, 2"- 5"

Replacement Stones:

**324** Replacement Stone Medium Grit

**220-240** Replacement Stone set of 3, 3-in. stones

## 888, 889 Spark Plug Speed Stick

- Extra Long Spark Plug removal tool
- Unique socket end that can swivel for difficult angles or lock in to place if needed.
- Comes with a T-Handle for extra leverage & a 3/8" Drive that can be used with a ratchet or air wrench.
- Aluminum anodized Sleeve over the shaft allows user to be able to speed turn the wrench.
- Has a special grip in side of socket to hold the spark plug in place for removal and installation.
- 19" Length.

**888** Spark Plug Speed Stick 5/8-in. socket

**889** Spark Plug Speed Stick 13/16-in. socket



## 641 Piston Ring Compressor Set

- Seven piece set installs piston rings from 2-7/8-in. to 4-3/8-in. (73mm to 111mm).
- Works both vertically and horizontally.
- Set includes fine tooth ratcheting pliers for accurate compression and 6 interchangeable bands.
- Interchangeable Bands: No. 641-1 Band Size 2-7/8-in. to 3-1/8-in. No. 641-2 Band Size 3-1/8-in. to 3-3/8-in. No. 641-3 Band Size 3-3/8-in. to 3-5/8-in. No. 641-4 Band Size 3-5/8-in. to 3-7/8-in. No. 641-5 Band Size 3-7/8-in. to 4-1/8-in. No. 641-6 Band Size 4-1/8-in. to 4-3/8-in.



## 735 Euro Stretch Belt Installation Tool

- Larger with different pin configuration to accommodate larger pulleys with different designs found on many European vehicles.
- Quickly and easily installs stretch belts.
- Will not damage stretch belts during installation.
- Stretch Belts are being used more often in new vehicles and this tool is necessary in most applications.
- Eliminates the belt tensioner.
- Installation can be difficult because if the belt is twisted it can be damaged. This tool prevents that potential damage.
- Patented



## 736 Stretch Belt Installation Tool

- Quickly and easily installs Stretch Belts.
- Will not damage stretch belts during installation.
- Stretch Belts are being used more often in new vehicles and this tool is necessary in most applications.
- Eliminates the belt tensioner.
- Installation can be difficult because if the belt is twisted it can be damaged. This tool prevents that potential damage.
- Patented



## 734 The Grabber Serpentine Belt Tool

- Clamping jaw allows user to position serpentine belt without the belt slipping out of the tool.
- Tru-grip and long reach allows belt routing in tight access areas that would normally be difficult if not impossible.
- Body made of light-weight alloy steel for durability and strength.
- Ergonomic handle provides comfort and ease in use, acting as an extension of the users hand.
- Patent Pending



## 52300 Seal Puller

- Deluxe automotive seal puller



## 186 Pitman Arm Puller

- Heavy duty tool is designed to remove pitman arms from late model cars and light trucks.
- Yoke is forged from high grade alloy steel and heat treated.
- 1 5/16-in. opening, 2 1/2' pull.



## 526 Flange Type Axle & Front Wheel Hub Puller

- For use on domestic and import cars and light trucks.
- Range is 3-3/4-in. to 4-1/2-in.
- For use on 4,5, or 6 bolt stud design and all non-C lock GM axles.
- May be used with Cal-Van No.498, Flange Type Puller



## 94800 Hub Puller

- Tool will remove wheel hubs mounted on tapered axles and press fit rear brake drums.
- Can be adjusted by legs to an 8-in. diameter bolt circle.
- Made of alloy steel and drop forged, this heavy duty tool has a center screw 1-in.-14 x 9-in. with a 1-1/8-in. hex head.



## 91800 Rear Bearing Puller

- Use this new tool to quickly and easily remove rear bearing wheel axles.
- No more banging with a slide hammer to remove these difficult bearings.
- Use the yoke and feet to set the removal foot over the bearing. Choose the proper foot and attach the thrust bearing and forcing nut. Attach impact or air wrench and remove the bearing completely
- Saves time and effort



## 946 Inner Tie Rod Removal Tool

- Turns smooth tie rods easily.
- Simply slide tool over the end and tighten collar to allow access with an extension.
- Can remove Inner tie rod without removing the outer tie rod
- No more bulky tool to store.
- Inexpensive and effective way to turn these smooth tie rod ends.



## 510 Coil Spring Compressor

- This tool removes and installs coil springs quickly and safely.
- Compress coil springs on all passenger cars and pick-up trucks.
- Instructions included.
- Not for use with impact tools.



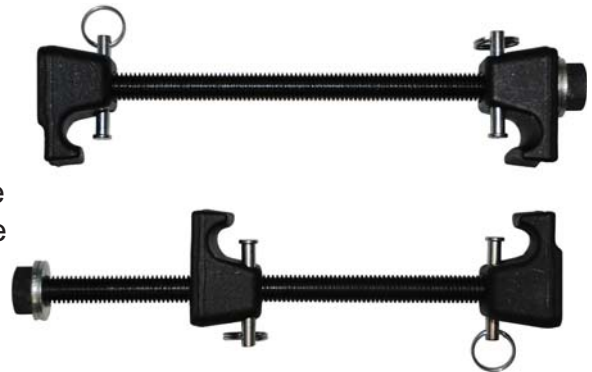
## 512 MacPherson Strut Tool

- Tool designed to be used on vehicles equipped with MacPherson Struts.
- Allows user to quickly compress the coil spring to replace shock absorber, spring sets, repair bent strut or strut tube and repair damaged spindle.
- Instructions and safety hooks included.
- Not for use with impact tools.



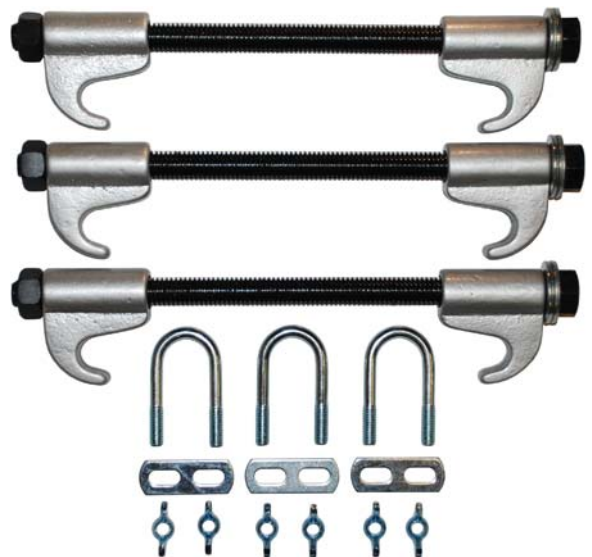
## 513 Master MacPherson Strut Tool Set

- Professionals choice.
- Tool designed to be used on vehicles equipped with MacPherson Struts.
- Allows user to quickly compress the coil spring to replace shock absorber, spring sets, repair bent strut or strut tube and repair damaged spindle.
- Instructions and safety hooks included.
- Not for use with impact tools.



## 91000 Coil Spring Clamps

- Three piece heavy duty tool allows for easy removal or installation, where removal of spring through the center is not possible.
- Set clamps in any position.
- Tool comes with three safety U-Bolts.
- Not for use with impact tools.





## 90200 Master Spring Compressor Set

- Features our two most popular Spring Compressors 90500 Master Mac Strut Tool and the 91500 Coil Spring Compressor.
- Packaged in Heavy Duty Blow molded case.
- Includes: Spring gauge, Acme threaded rod.
- 905 Features Built in Safety Pins
- 2 in 1 Tool
- Not for use with impact tools.



## 805 Magnetic Wheel Weight Tool

- Holds wheel weights in place to prevent finger injuries.
- Magnetic end holds wheel weights to easily secure wheel weight to rim.
- Works on most sizes of wheel weights.



## 90100 Hub Tool

- This tool is designed for removing the hub assembly from Ford 4-Wheel Drive Pickup Trucks when replacing ball joints, without causing damage to the wheel bearings.
- Enables the technician to drive wheel bearings out from the back of the hub assembly by threading the tool over the hub assembly stud.
- The tool has threads that match those of the four 1/2" hub assembly studs.
- Includes adapter for Dodge applications.
- Patent pending.



## 554 Camo Pac

- 1700 Peak Amps
- 22 AHr Battery - 300 CCA
- 550 Amp Fully Insulated Copper Clamps
- 29" 6-Gauge Cables
- Premium Long Life Battery
- Starts Over 40 Vehicles on a Single Charge
- Adjustable Multi-Position Light
- Battery Status Indicator
- DC Cord Outlet
- Automatic Shutoff Charging
- Durable, Drop-Tested, Chemical, Heat and Cold Resistant Case



Features a multi-position light and high-quality insulated copper clamps.

## 556 Marine

- 1700 Peak Amps
- 22 AHr Battery - 300 CCA
- 300 Watt Power Inverter
- 550 Amp Fully Insulated Copper Clamps
- 48" 4-Gauge Cables
- Premium Long Life Battery
- Starts Over 40 Vehicles on a Single Charge
- Adjustable Multi-Position Light
- Battery Status Indicator
- Built in A/C Charger
- DC Cord Outlet
- Automatic Shutoff Charging
- Durable, Drop-Tested, Chemical, Heat and Cold Resistant Case



Features a multi-position light, high-quality insulated copper clamps and a 300 watt DC-to-AC inverter to power cell phones, TVs, laptops and tools.

### 555 Camo Pro Pac

- 1700 Peak Amps
- 22 AHr Battery - 300 CCA
- 300 Watt Power Inverter
- 550 Amp Fully Insulated Copper Clamps
- 48" 4-Gauge Cables
- Premium Long Life Battery
- Starts Over 40 Vehicles on a Single Charge
- Adjustable Multi-Position Light
- Battery Status Indicator
- Built in A/C Charger
- DC Cord Outlet
- Automatic Shutoff Charging
- Durable, Drop-Tested, Chemical, Heat and Cold Resistant Case



Features a multi-position light, high-quality insulated copper clamps and a 300 watt DC-to-AC inverter to power cell phones, TVs, laptops and tools.

### 558 Mini-Jumper

- 900 Peak Amps
- 12 AHr 200 CCA Battery
- 10 Jumps on a Single Charge
- Built-In Charging Circuit with Automatic Shutoff
- 10 watt Halogen Spotlight
- 29" 6-Gauge Cables
- 400 Amp Clamps with Solid Copper Jaws
- Only 13 lbs



Portable Power for Work, Home or Play

## 551 Battery Post & Clamp Cleaner

- This battery post and clamp cleaning brush is designed for fast, and efficient cleaning of terminal connections.
- Plastic case prevents grounding.



## 553 Heavy Duty Battery Post & Terminal End Brush

- This heavy duty battery post and clamp cleaning brush is designed with tapered bristles to clean posts and terminal ends quickly and safely.
- Metal case.



## 549 Battery Terminal Clamp Spreader

- Designed to both spread battery cable clamp and clean terminal in one swift operation.
- Forged and heat treated jaws.
- 7-1/2" overall length.



## 547 Battery Terminal Bolt Pliers

- Use on square, hex or round nuts.
- Tapered nose for tight access areas.
- Safe vinyl covered handles provide maximum leverage.
- Forged and heat treated.
- 7-1/2" overall length.



## 76 Relay Circuit Pro

The 76 Deluxe 12/24 Volt Relay Tester is a tool that can test an entire circuit from the battery to the component in question, as well as determining if the relay itself is functioning properly. This tool gives the technician the ability to instantly determine the problem within a tested circuit. It will identify at the push of a button if a wire, a part, or a relay is defective, without the use of a multi-meter. If the technician wishes to gain more information about the problem, the tool also features easily accessible ports for use with other diagnostic tools. This tester also has other practical uses. Since the item can jump the relay, the technician can use it as a remote control starter in engine work like compression testing, distributor or cam shaft adjusting, or to run the compressor during an A/C charge.

- Kit includes the tester, 6 popular relay connectors, 1 universal relay lead.
- Comes in a blow molded case with a high density foam insert.
- Works with both 12 and 24 volt systems.
- Patent pending.



**2012 Innovation Award Winner**

## 67 Power On Circuit Tester

- Tests 6-12-24 volt circuits for wire breaks, shorts, fuses, lamps, relays, armatures, etc. with power on.
- 48-in. 16 gauge wire with alligator clip.
- No. 67-01 Two replacement indicator bulbs.



## 70 Heavy Duty Circuit Tester

- Tests 6-12-24 volt AC or DC systems for open, grounded or short circuits.
- 60-in. 16 gauge wire with heavy duty ground clip.
- No. 67-01 Two replacement indicator bulbs.



## 145 Spark Plug Boot Pliers

- This 10-in.-long reach spark plug boot pliers is designed to remove hard to reach spark plug boots.
- Double insulated to give complete protection from shock.
- Handles and jaws are double dipped to assure complete coverage of all contact areas.
- Also can be used for light bulb removal.



## 825 Spark Plug Gap Gauge

- Designed with a tapered edge for gauging spark plugs and with a flanged hole to adjust the side wire of plugs without pressuring center electrode.
- Marked in standard and metric sizes.
- Used to gap all plugs from .020 to .080 (0.6mm to 2.0mm).



## 693 Ignition Point Files

- Quality double cut ignition files guaranteed to file tungsten and platinum contact points.
- Made of super hard, high quality steel with Rockwell hardness of 65.



**64 High Energy Ignition Tester**

- Safely checks for spark on any ignition system or engine with 1 to 12 cylinders.
- Simply attach spark plug wire to tester and clip tester to engine. Crank the engine and check for the presence of spark.
- Sealed chamber reduces risk of fire around high pressure fuel injection systems or marine use.

**135 Ford Radio Remover Tool**

- Tool inserts into holes on radio face to release retaining clips.
- Fits Ford vehicles 1987 to current.
- Makes removal fast and easy.



## 291 Truck & Tractor Oil Filter Pliers

- Spring loaded, adjustable pliers can easily adjust from 3 3/4-in. to 7-in.
- Heavy forged construction creates leverage for high torque applications.
- Can be used in one hand applications.



## 297, 298 Oil Filter Pliers

**297** Oil Filter Pliers fits filters with diameter of 2 3/4-in. to 3 1/4-in. (70mm-83mm).

**298** Oil Filter Pliers fits filters with diameter of 3 1/8-in. to 3 5/8-in. (79mm-92mm).

- Pliers design features no-slip jaws with gripping teeth to easily remove stubborn spin-on oil filters.



## 302 Adjustable Oil Filter Pliers

- Self adjusting, spring action (NOT a slip joint) oil filter pliers allow for a full range of filter applications.
- Heavy duty forged construction with textured grip add both strengthened leverage to the tool.
- Fits filters from 2 1/4" to 5 3/4" (57 mm - 146 mm)





## 785, 788, 789, 791 Cup Type Oil Filter Wrenches

- These cup-type filters are made of 7 and 16 gauge construction and can withstand up to 85 ft. lbs. of torque.
- Cup-type design grips like a socket thus minimizing the possibility of crushing filters.
- Used with 3/8-in. drive.

**785** Cup Type Oil Filter Wrench 65mm (2-9/16-in.) - 14 flutes - 1 step Fits: Champ, Hastings, FM/AC, Wix, Napa, Purolater, Diahatsu, Toyota.

**788** Cup Type Oil Filter Wrench 74mm to 76mm (2-29/32-in. to 3-in.) 15 flutes - 2 step Fits: Fram, AC, Saturn.

**789** Cup Type Oil Filter Wrench 76mm (3-in.) - 14 flutes - 1 step Fits: Champion, Champ, Lee, Purolator, Mopar, VW, Porsche, Mercedes, BMW.

**791** Cup Type Oil Filter Wrench 93mm (3-21/32-in.) - 15 flutes - 1 step Fits Casite, Champ, Champion, GM, Fram, Hastings, Purolater, Wix, Nissan, VW, Porsche, Renault.



## 784ALUM, 786ALUM Aluminum Diecast Filter Wrenches

- These aluminum die-cast filters are designed for tight fit and sure grip.
- They feature a 3/8" drive that is extended for use also with a hex wrench or ratchet and socket.
- Heavy duty construction.
- Sizes are ideal for many tractors and agricultural equipment as well as some automotive applications.

**784ALUM** Aluminum Diecast Filter Wrench 2-1/2" Cap Style Wrench

**786ALUM** Aluminum Diecast Filter Wrench 3" Cap Wrench



## 967 4-In-1 Swivel Oil Filter Wrench

- Wrench set features one swivel handle assembly with four(4) interchangeable bands.
- Designed with two détente pins for quick and easy band attachment.
- Fits oil filters 2-3/8-in. to 4-3/8-in. (61mm-111mm)



## 989, 991 Swivel Truck Oil Filter Wrenches

- Tool features a swivel handle which allows user to get to filters in hard-to-reach areas.
- Wide dimpled band securely grips filters without crushing.
- Easy grip vinyl handle.

**989** Swivel Truck Oil Filter Wrench Fits filters 4-5/16-in. to 4-3/4-in. (110mm-120mm) Works on Cummins and Detroit Diesel engines.

**991** XL Swivel Truck Oil Filter Wrench



## 891, 892, 893 Heavy Duty Truck Oil Filter Wrenches

- Wide 1-1/2-in. steel band designed to withstand the high torque requirements of truck, bus, RV, and heavy duty equipment filters.
- Use with 1/2-in. square drive tool.

**891** Heavy Duty Truck Oil Filter Wrench fits filters 4-1/8-in. to 4-21/32-in. (105mm-118mm)

**892** Heavy Duty Truck Oil Filter Wrench fits filters 4-21/32-in. to 5-5/32-in. (118mm-130mm)

**893** Heavy Duty Truck Oil Filter Wrench fits filters 5-5/32-in. to 5-21/32-in. (130mm-143mm)



## 993, 994, 995, 999 Swivel Oil Filter Wrenches

- Tool features a swivel handle which allows user to get to filters in hard-to-reach areas.
- Wide dimpled band securely grips filters without crushing.
- Easy grip vinyl handle.

**993** Swivel Oil Filter Wrench fits filters 2-3/8-in. to 2-7/8-in. (60mm-73mm) dia.

**994** Swivel Oil Filter Wrench fits filters 2-7/8-in. to 3-1/4-in. (73mm-83mm) dia.

**995** Swivel Oil Filter Wrench fits filters 3-7/16-in. to 3-3/4-in. (87mm-95mm) dia.

**999** Swivel Oil Filter Wrench fits filters 4-in. to 4-3/8-in. (102mm-111mm) dia.



## 803 Deluxe Strap Oil Filter Wrench

- This deluxe wrench adjusts quickly to any spin-on filter.
- Features 3/8-in. and 1/2-in. forged driver and heavy duty strap for high torque requirements.
- Fits filters up to 9-in. (228mm)



## 814 All Size Oil Filter Wrench

- This filter wrench adjusts quickly to any spin-on filter up to 6-in. in diameter.
- Strong nylon web belt will not slip.
- Use with 1/2-in. square drive wrench.
- No. 814-02 Replacement Strap



## 25200 Ford Fuel Filter Wrench

- Low profile that allows mechanics to access those tough fuel filters in tight quarters.
- Used for the installation and removal on Ford Power Stroke Diesel and International/Navistar Diesel engines.
- Other wrenches sometimes break off points of the lid due to pressure not being distributed by the wrench, but this tool spreads the force over six points, preventing damage.



## 987 Heavy Duty Three Legged Oil Filter Wrench

- This three leg design is ideal for removing spin-on filters in tight access areas.
- No handle to interfere with removal.
- Long serrated legs driven by a 3/8-in extension and ratchet wrap around the filter.
- Fits filters with diameter of 2-1/2-in. to 4-3/4-in. (64mm-121mm)



## 988 Three Legged Oil Filter Wrench

- Features gear driven legs to grip and turn the tightest filters.
- Designed for use with 3/8 in. driver or 3/4 in. hex wrench.
- Compact design allows for use in tight spaces.
- Removes filters from 2 3/8 in. to 3 3/4 in. (60-95 mm)



## 154, 161, 164 In-Line Flaring Tool

The new In Line Flaring Tool from Cal-Van Tools enables the user to flare copper or soft steel tubing in tight spaces with its low profile design. The design also enables the technician to use a ratchet or wrench. This new patented flaring tool design makes perfect single or double flares easily. The double clamp and hex body keeps tube from slipping, keeps flares centered, and makes the job of flaring easier. Superior to bar type flaring tools.

- Low profile design allows for use on or off the vehicle
- Designed to be used with a ratchet to make flares easier
- In line design makes a more accurate flare
- Double clamp and hex screw design keeps tubing locked tightly in position
- For use on thin walled steel and copper tubing
- Available in SAE (164), Metric (154) and Auto-Specific Set (161)
- Patent Pending

**154** In-Line Flaring Tool Metric

**161** In-Line Flaring Tool Auto-Specific Set (Sold In Pouch)

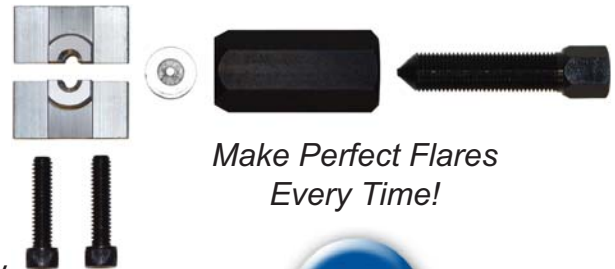
**164** In-Line Flaring Tool SAE



*Make  
Perfect Flares  
Every Time!*

## 155 In Line 4.75mm Bubble Flaring Tool Kit

- Makes Bubble flares on 4.75mm soft steel or copper tubing
- In line design for factory quality flares and tight access applications
- Bars directly clamp over tubing for no push through.
- Clamp and hex sleeve work together to ensure perfectly symmetrical flares
- Patent pending



*Make Perfect Flares  
Every Time!*



## 156 Bubble / ISO In-Line Tube Flaring Kit

- Works for Bubble / ISO flares 4.75mm, 6mm, 8mm tubing.
- Low profile design allows for use on the car or off.
- Designed to be used with a ratchet to make flares easier.
- In-line design make a more accurate flare.
- Double clamp and hex crew design keeps tubing locked tightly in position.
- For use on thin walled steel and copper tubing.
- Comes in easy store case.



*Make Perfect Flares  
Every Time!*



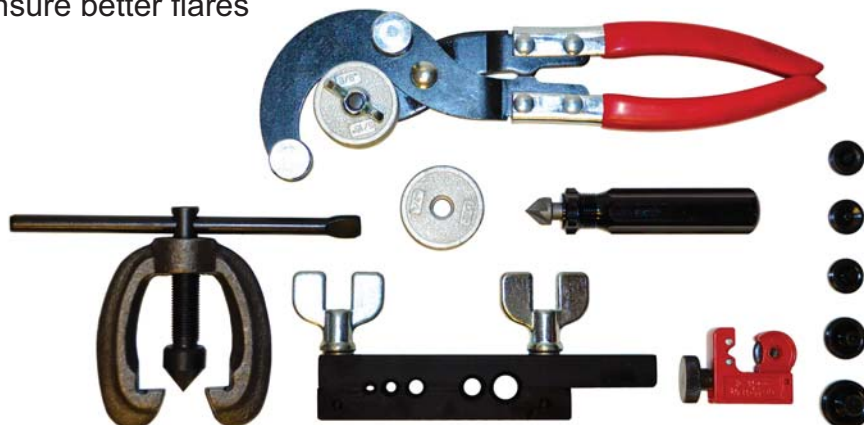
## 82800 Tube Service Kit

This kit features the tools that a technician will need to make SAE single and double flares on soft steel or copper tubing. All of these tools come in one convenient blow molded case.

- 163 Double flaring Tool for making Single and double flares on soft steel or copper tubing. Works on 3/16", 1/4", 5/16", 3/8", & 1/2" tubing for single or double flares.
- 151 Mini Tube cutter to cut 1/8" to 5/8" tubing
- 758 Heavy Duty Tube Bender, plier type bender that bends steel tubing 3/16", 1/4", 5/16", and 3/8" without kinking or collapsing.
- A reamer to de-burr cut tubing and ensure better flares



*A Complete SAE Bend-and-Flare Kit*



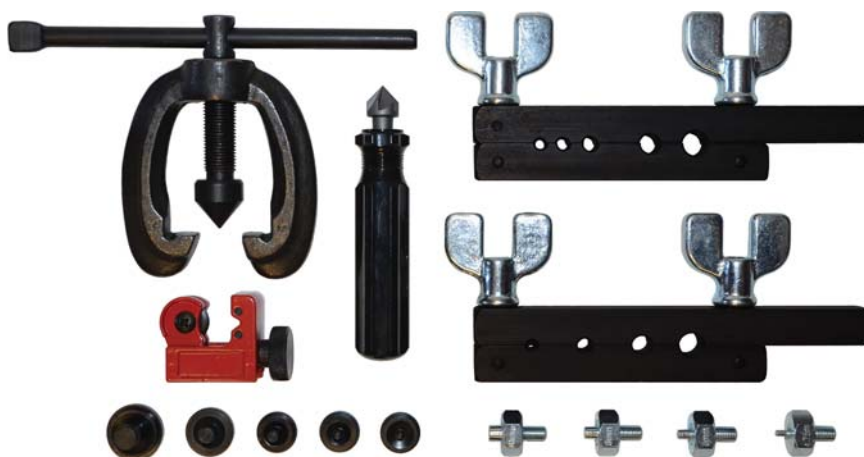
## 82900 Double & Bubble Flare Tool

This set contains the tools necessary to create single or double flares, as well as Bubble flares on soft steel and copper tubing. The 2 in one set contain the 163 Double flare tool and the 82700 Bubble flare tool set in 1 convenient blow molded case.

- Single & Double Flares 3/16", 1/4", 5/16", 3/8", & 1/2" Tubing
- Bubble Flares 4.75mm, 6mm, 8mm, 10mm Tubing



*Any SAE Double Or Bubble Flare  
Any Time!*



## 151 Mini Tubing Cutter

- Cuts soft and Copper tubing 1/8" to 5/8" in Diameter
- Alloy Steel cutting wheel

*A Compact Tube Cutting Solution!*



## 82700 Metric Bubble Flaring Tool Kit

- Forms Bubble Flares in soft steel and copper tubing.
- Flares metric Hydraulic brake lines used on Japanese, European, and domestic automobiles.
- Works on 4.75mm, 6mm, 8mm, 10mm Tubing



*Makes Bubble Flares For The Most Common Metric Sizes*



## 36700 Two-In-One S-Cam Brake Tool

The **Cal-Van Tools, 2-In-1 S-Cam Brake Tool**, offers technicians a more efficient method for changing brake shoes on an S-Cam drum brake assembly. The tool is comprised of a steel shaft with a U-shaped fork on one end to stretch the retaining spring so that both halves of the brake shoes are held together, which enables the user to hook up the pin. An S-shaped device on the opposite end enables the user to position the brake shoes in a way that allows leverage for installation of the rollers. The hooked end pulls the brake shoes apart so that the rollers can be installed faster and more safely.



## 153 Metric Double Flaring Tool

- Designed to withstand high pressures necessary to double-flare soft steel tubing as well as single-flare soft copper, aluminum and brass tubing.
- Set includes drop forged compressor yoke, 5 double-flare adapters and threaded die holding bar with size capacity 4.15mm, 5mm, 6mm, 8mm and 10mm. Blow molded case.



## 163 Double Flaring Tool

- This 45 degree double flaring tool set is designed to withstand the high pressure necessary to double flare soft steel tubing, as well as single flare soft copper, aluminum and brass tubing.
- Includes: Five(5) double flare adapters, drop forged compressor yoke, and bar assembly w/ size capacity- 3/16-in., 1/4-in., 5/16-in., 3/8-in. and 1/2".
- Also available in Metric w/ size capacity- 4.15mm, 5mm, 6mm, 8mm and 10mm. (153)



## 162 Single Flaring Tool

- This 45 degree flaring tool set is designed to withstand the high pressure necessary to flare soft steel tubing, as well as single flare soft copper, aluminum and brass tubing.
- Includes: Drop forged compressor yoke, and bar assembly w/ size capacity- 3/16-in., 1/4-in., 5/16-in., 3/8-in., 7/16", 1/2" and 5/8".
- Also available in Metric w/ size capacity- 4.15mm, 5mm, 6mm, 8mm and 10mm.



## 758 Heavy Duty Tubing Bender

- Bends 3/16-in., 1/4-in., 5/16-in., and 3/8-in. diameter copper and steel tubing.
- Will not cause kinking or collapsing.
- Includes: Two roller adapters.



## 700 Universal Brake Pad Spreader

- Allows installer to easily compress both pistons at once, facilitates both single and dual piston applications.
- Usage for Ford F150 & F50, Ford & GM front wheel drive vehicles.



## 702 Disc Brake Pad Spreader

- Facilitates the quick and easy changing of disc brake pads.
- Spreader will compress inner pad and reset piston for easy pad replacement.
- Heavy duty construction.



## 27100 Brake Shoe Spreader

- Designed to hold brake shoes apart when replacing leaking rear wheel cylinders on most front wheel drive cars.
- Can cut time in half when replacing leaky rear wheel cylinders.



## 357 Disc Brake & Small Engine Hone

- Adjustable tension flex shaft cylinder hone covers 1 1/4-in. to 3 1/2-in. (32mm-89mm) diameter cylinders.
- Use on most compact cars, as well as, cycles, lawnmowers, and outboard motors.
- Includes three(3) 2-in. (51mm) Medium grit stones.
- To hone disc brake cylinders larger than 1 1/4" (32mm), Order No, 358-1 Fine Grit Stones (Not included)

Replacement Stones:

**357-1** Replacement Stones 2-in. (51mm) Medium Grit, 220-240 Grit, Set of 3.

**357-3** Replacement Stones 2-in. (51mm) Fine Grit, 400 Grit, Set of 3.

**358-1** Replacement Stones 3/4-in. (19mm) Fine Grit, 400 Grit, Set of 3.



## 358 Disc Brake & Caliper Hone

- Equipped with special size Fine Grit Stones to hone disc brake calipers providing that the diameter of the bore is not increased over .002 inch(.5mm).
- Adjustable tension, capacity 3/4-in. to 2 1/2-in.(19mm-64mm)
- Includes three(3) 3/4-in. (19mm) Fine Grit Stones

Replacement Stones:

**358-1** Replacement Stones 3/4-in. (19mm) Fine Grit, 400 Grit, Set of 3.



## 362 Adjustable Brake Cylinder Hone

- Finest "full range" hone on the market covers sizes from 3/4-in. to 2 1/2-in. (19mm-64mm).
- Knurled nut controls tension for honing, deglazing throughout full range.
- Hones clear to end in step-cut and blind end cylinders.
- Flexible shaft for easy use right on car.
- Includes three(3) 1 1/8-in. (29mm) Medium Grit Stones

Replacement Stones:

**363** Replacement Stones 1 1/8-in.(29mm) Medium Grit, 220-240 Grit Set of 3

**363-01** Replacement Stones 1 1/8-in.(29mm), Fine Grit, 400 Grit, Set of 3

**363-02** Replacement Stones 1 1/8-in.(29mm), Coarse Grit, 100 Grit, Set of 3



## 762 Sub Compact Brake Cylinder Hone

- Recommended for cylinder bores 1/2-in. to 2-1/4-in. (13mm-57mm) diameters.
- Offers fast easy cutting with high or low speed drills.
- Self aligning and self centering.
- Flex joint drive with adjustable tension.
- Includes: Two 1-1/8-in. (29mm) Med. Grit Stones

Replacement Stones:

**763** Replacement Stones 1-1/8-in. (29mm), Med. Grit, 220-240 Grit





## 247 One Man Brake Bleeder

- Simple design for ease of use.
- No springs, no diaphragms, no moving parts, no connections to leak, and no way air can re-enter the system once the brake pedal is released.
- Instructions included.



## 722 Disc Brake Piston Remover

- Rotates the parking brake activated piston back into caliper cylinder when replacing worn pads.
- Used on most import, Ford, Chrysler and some GM vehicles equipped with four wheel disc brakes.
- Use with 3/8" drive.



## 855 Brake Bleeder Tank

- Light weight and easy to use.
- Portable tank fills and bleeds both standard and power brakes in a single operation.
- Tank is easily pressurized with just a few strokes of the built-in hand pump, eliminating the need for a compressor.
- One (1) gallon capacity, features extra long hose, quick disconnect coupler, shut off valve, and pressure gauge.



## 30900 Brake Spring Tool

- New brake tool for 18 wheelers.
- Designed by professional mechanics to remove and replace springs.
- Allows user to press spring into place with one simple motion, taking place of the slide mechanism.
- 8 3/4-in. overall length.



## 32900 Master Cylinder Brake Bleeder

- Easily bench bleeds master cylinder in one attempt saving the user time and prevents possible seal damage from using a screwdriver or punch.
- Adjustable arm to fit almost all master cylinders.



## 95200, 95300, 95400 In-Line Dowel Pin Puller

- New Dowel Pin Puller that extracts Dowels without the use of a slide hammer.
- Fit the appropriate sized collet over the dowel, tighten the sleeve, Use outer sleeve and nut to extract the dowel.
- Can be used with air ratchet, or traditional ratchet.
- Elimination of the slide hammer saves cost as well as effort and potential hand injury.
- SAE Set includes 3/16, 1/4, 5/16, 3/8, and 1/2
- Metric Set Includes 4, 5, 6, 8, 10, and 12MM
- Master Set includes both SAE and Metric Collets
- Patent pending.



**95200 In-Line Dowel Pin Puller SAE**

**95300 In-Line Dowel Pin Puller Metric**

**95400 In-Line Dowel Pin Puller Master Set**

## 438 Spiral Screw Extractor Set

- Forged alloy steel, this spiral style extractor can be used to extract broken studs or screws.
- Correct drill size for hole in part to be extracted is indicated on the tool.
- Available as individuals: No. 431- For Removing Screws Shank- 3/16  
No. 432- For Removing Screws Shank- 1/4 No. 433- For Removing Screws Shank- 5/16  
No. 434- For Removing Screws Shank- 7/16



## 441 Fluted Screw Extractor Set

- Forged alloy steel, this tapered style extractor can be used to extract broken studs, screws, pipe and pipe fittings.
- Has gradual taper and long flutes.
- Available as individuals: No. 441-1- For Removing Screw/Stud/Bolt- 1/4", 5/16" No. 441-2- For Removing Screw/Stud/Bolt- 3/8" No. 441-3- For Removing Screw/Stud/Bolt- 7/16" No. 441-4- For Removing Screw/Stud/Bolt- 1/2", 9/16" No. 441-5- For Removing Screw/Stud/Bolt- 5/8"



## 450 Tight Access Drive Wrench

- Gear driven to gain easy access to tight areas where a box type wrench would not be practical
- Dramatically reduce time needed to remove fasteners in awkward areas
- Comes in a set of 5 (10mm, 12mm, 13mm, 14mm, 15mm) w/blow molded case
- Includes adapter for use with 3/8" sockets
- A real time saver.
- Patented



## 183 Nut Splitter

- A real time saver when removing rusted or corroded nuts.
- This compact tool will split nuts up to 1/2" automotive series or any nut 7/8" across flat.
- No air or power needed, a few turns with a 3/4" hand wrench is all that is necessary.



## 19 Stud Remover

- This powerful tool is designed to fit into hard-to-reach spots and to remove hard-to-turn studs.
- Will remove broken studs with threads with material above the surface.
- Capacity from 1/4-in. to 3/4-in. (6 to 19mm) diameter.
- Zinc plated.
- Roller assembly grips like a pipe wrench.
- Works with a 1/2-in. drive



## 503 Bearing Splitter

- For removing generator gears, bearing cones, bearings and similar parts that ordinary puller jaws cannot reach.
- Knife edges are flush on one side for easy pulling. Bolts are heat treated for added strength.
- No. 503 Bearing Splitter for use with Puller
- No. 943 Capacity: 0" to 4 1/4" (108 mm) 5/8", 18 Holes



## 912 Extra Long Torx Screwdriver Set

### 917 Tamper-Proof Extra Long Torx Screwdriver Set

- Long shaft for hard to reach areas.
- Made of S-2 steel for strength.
- 15-3/4-in. length.
- Set Includes: T-10, T-15, T-20, T-25, T-27, and T-30.



### 913 Tamper Resistant Square Drive Torx Bit Set

- Contains nine of the most popular tamper resistant square drive bits.
- Bits with 1/4" drive include T-10, T-15, T-20, T-25, T-27, T-30.
- Bits with 1/4" drive include T-40, T-45 and T-50.
- TORX drivers are also available individually.



### 914 Tamper Resistant Square Drive Torx Bit Set

- Designed for installing and removing tamper-proof Torx fasteners.
- Set includes: T-10, T-15, T-20, T-25, T-27, T-30, and T-40 plus bit holder and 1/4-in. x 1/4-in. stored in vinyl pouch.



## 920 Torx Socket Sets

- Remove and install Torx head bolts.
- Available in 1/4-in. and 3/8-in. square drive sizes.
- Bits are easily adaptable to power or hand driven tools.
- Includes: No.921 E-6 Torx Socket 1/4-in. drive x 1-in. length No.922 E-7 Torx Socket 1/4-in. drive x 1-in. length No.923 E-8 Torx Socket 1/4-in. drive x 1-in. length No.925 E-10 Torx Socket 3/8-in. drive x 1-1/4-in. length No.926 E-12 Torx Socket 3/8-in. drive x 1-1/4-in. length No.927 E-14 Torx Socket 3/8-in. drive x 1-1/4-in. length No.928 E-16 Torx Socket 3/8-in. drive x 1-1/4-in. length



## 932 Torx Socket Set w/ Holder (Internal)

- Twelve (12) of the most popular Torx bits are conveniently assembled in a vinyl holder.
- Includes: No.930-1 T-10, 1/4-in. Drive No.930-2 T-15, 1/4-in. Drive No.930-3 T-20, 1/4-in. Drive No.930-4 T-25, 1/4-in. Drive No.930-5 T-27, 1/4-in. Drive No.930-6 T-30, 1/4-in. Drive No.930-7 T-40, 3/8-in. Drive No.930-8 T-45, 3/8-in. Drive No.931 T-47, 3/8-in. Drive No.930-9 T-50, 3/8-in. Drive (GM & Ford) No.930-10 T-60, 1/2-in. Drive (GM) No.930-12 T-55, 3/8-in. Sq. Drive



## 933 Master Torx Bit Set

Complete set provides the most torque for all applications.

Bits composed of S2 Phosphate Manganese.

Comes in blow molded case for easy storage.

Includes: Torx Bits: T-10,T-15,T-20,T-25,T-27,T-30,T-40,T-45,T-47,T-50,T-55. Tamper-Proof: T-10,T-15.T-20,T-25,T-27,T-30,T-40,T-45,T-50,T-55. Torx Sockets: E5,E6,E7,E8,E10,E12,E14,E16,E18,E20 Also Includes: 1/4-in. bit holder, 3/8-in. bit holder, No.488 Twin Spin Drive Converter, and No.906 Finger Bit Driver



## 100 Master Finger Bit Driver Set

- Includes some of the most popular finger bit drivers available.
- Low profile for access to tight areas.
- Knurled bodies for sure grip.



## 104-03 Finger Socket Driver 3-Pack

- Allows access into tight areas using 1/4" 3/8" sockets.
- Diamond knurl design for positive grip.
- Includes: One No.102 3/8" male - 1/4" female. One No.103 1/4" male - 3/8" female. One No.104 3/8" male - 3/8" female



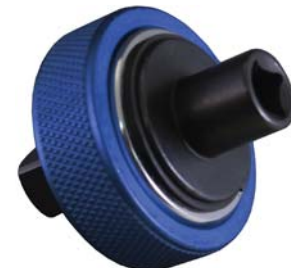
## 108 Mini Finger Ratchet

- New finger Style Ratchet
- Small size great for tight areas
- Aluminum Knurled outer ring for sure grip
- Reversible Ratchet
- 1/4" Drive on one side, 1/4" Hex Drive on other
- Available in Silver or Red Anodized aluminum



## 109 Finger Ratchet (3/8" Drive)

- New finger Style Ratchet
- Small size great for tight areas
- Aluminum Knurled outer ring for sure grip
- Reversible Ratchet
- 3/8" Drive on one side, 1/4" Hex Drive on other
- Available in Blue Anodized aluminum



## 906 Finger Bit Driver

- Convenient tool allows access into the tightest of areas.
- Heavy duty mini-driver uses 1/4-in. square drive, 1/4-in. hex bits.
- Generates substantial torque, and comes in bright easy-to-access colors.
- Available in 20 (90620) & 30 (90630) Piece Merchandisers.



## 482 90 Degree Gearless Angle Drive (1/4")

## 483 90 Degree Gearless Angle Drive (3/8")

- Allows access to hard to reach areas.
- Replaces hard to use universal adapters.
- Exceeds ANSI specs torque max for universal socket adapters.
- Patented



## 485 45 Degree Gearless Angle Drive (1/4")

## 486 45 Degree Gearless Angle Drive (3/8")

- Allows access to hard to reach areas.
- Replaces hard to use universal adapters.
- Exceeds ANSI specs torque max for universal socket adapters.



## 488 Twin Spin Drive Converter (1/4" - 3/8")

## 489 Twin Spin Drive Converter (3/8" - 1/2")

- Can be used to use a 1/4in. drive socket on a 3/8in. ratchet or a 3/8in. drive socket on a 1/4in. ratchet.
- Can withstand higher torque than traditional adapters.
- Can be used as a small extension or hand drive for tight access.
- Patented



## 48100 Master Ratchet Accessory Set

- Set Includes many popular items available from Cal Van.
- All the items you need to get to tight access areas, around corners, and adapt sockets to step up and down.
- Set Includes: Two (2) Gearless Angle Drives, two Twin Spin Converters and one (1) Finger Bit Driver w/bits.



## 480 1/2" Breaker Bar

- Extends from 15" to 24"
- Excellent for mobile technicians, allowing them to fit the bar in regular carry tool boxes.
- Has two buttons to lock the bar in three different positions.
- Tested in Independent lab to destruction of 6800 inch pounds. Some tested as high as 8000 inch pounds.
- Patented



## 341-SAE, 341-MET, 341-10 Mini-Hex Keys

### 341-SAE SAE Mini-Hex Keys

### 341-MET Metric Mini-Hex Keys

### 341-10 10 Piece Merchandiser with five SAE and Metric

- 10 Pack includes 5 SAE and 5 Metric Hex Key Sets.
- Handy small size fits comfortably into pocket to be ready when needed.
- Attaches easily to key chain.
- SAE contains the following sizes: 1/8", 5/32", 3/16", 7/32" 1/4", Flat and Phillips Mini-Screwdrivers.
- Metric contains the following sizes: 2 mm, 3 mm, 4 mm, 5 mm, 6 mm, Flat and Phillips
- Mini-Screwdrivers.
- Blue and Red anodized bodies.



## 81000 Hinge Pin Puller

- This tool makes removing household door hinges easy and safe, without doing damage to flooring or wood surfaces.
- Simply pull down on the handle and the pin is removed.
- Works on hinges with paint and rusty build up as well.
- This can be an invaluable tool for installers, carpenters, painters, or DIY's.



## 25 2" Round Telescoping Mirror

- 2 1/4-in. (57mm) round mirror.
- Double ball joint allows mirror to swivel freely 360 degrees yet hold a desired position.
- 7-in. insulated handle extends to 12-in.
- 17-in. overall length.



## 27 Telescoping Inspection Mirror

- 2-in. x 3 1/2-in. (51mm-89mm) rectangular mirror.
- Double ball joint allows mirror to swivel freely 360 degrees yet hold a desired position.
- 7-in. insulated handle extends to 12-in.
- 17-in. overall length.



## 226 Adjustable Magnetic Pickup Tool

- Magnet tool telescopes to 16-in. and will open to a full 27 1/2-in.
- Designed with a hex rod to eliminate potential for head to rotate under pressure.
- Will easily pick up 1.5 lbs.



## 287 Telescoping Magnetic Pickup Tool

- Pocket size magnet tool extends from 5 1/4-in. to 17 1/2-in.
- Complete with pocket clip.
- Lift capacity over 2 lbs.



## 627 Hook Scribe

- Two point scribing tool has one (1) straight and one (1) bent point.
- Hardened points screw into a knurled steel body.
- 8-1/4-in. overall length.



## 668 Pistol Grip LED Lighted Screwdriver

- Screw driver can either be a straight-grip or pistol-grip screwdriver
- Removable shank for use with other drivers
- LED light on handle for dark areas
- Bits stored in handle
- Professional quality, high-torque screwdriver





## 351 All Purpose Awl

- Heavy duty tool for aligning work, scribing and punching.
- Heat treated shank 1/4-in. x 4 3/4-in.



## 264 Parts Cleaning Brush

- For heavy duty cleaning of metal and masonry surfaces.
- 6-in. brush length with 14-in overall length.



## 878 Ratcheting Chain Wrench

- Chain wrench can be used on any object shape from 5/8-in. to 5-in. in diameter.
- Use chain with 1/2-in. drive.



## 767 Ratcheting Tubing / PVC Cutter

- Cuts industrial air hose, multi purpose hose, heater and washer hose vacuum hose, non metallic fuel line hose, PVC pipe, battery cables, copper tractor trailer cable and non metallic air brake hose, up to 1 1/2" in diameter.
- Features a quick release mechanism to quickly and easily open pliers for use.
- Ratcheting action makes cutting easy
- Also features a locking mechanism, in handle, for storage.



## 881SET Speed Stick Set

- Multi-purpose set that can be use for many applications including motorcycles, racing, and home use.
- Comes with a 3/8" and 1/4" Drive
- Aluminum Sleeve for fast turning
- Locking end to hold socket in place
- Pivoting end to get at odd angles
- 3/8" Drive on end to make for use with ratchet, use like an extension.
- 12-in. overall length.
- Posi-lock adapter to switch from square drive to hex for bits.
- Set Includes: One 3/8-in. speed stick, One 1/4-in. speed stick and One Posi-Lock Bit Adapter.



## 147 Snap Ring Pliers Set

### 148 Snap Ring Pliers (Internal)

### 149 Snap Ring Pliers (External)

- Internal snap ring pliers come with four sizes of interchangeable tips (90 Degree Angle Tips: .047 Dia., 45 Degree Angle Tips: .047 Dia., and 15 Degree Angle Tips: .039 & 0.74 Dia..).
- Comfort handle w/non-slip grip
- 3/4" jaw opening
- 147 Set includes both 148 and 149 pliers



## 268 Lock Ring & Snap Ring Pliers

- Used to spread snap rings found on brakes, pedal shafts, transmissions, clutch shafts, machine tools, and some piston rings.
- Jaws are scored on the outside for secure gripping.
- 3/4-in. jaw opening.
- 8 3/4-in. overall length.



## 1015 Snap Ring Pliers Set

- These snap ring pliers feature fixed tips.
- Pliers are easily converted from external to internal.
- Available in six(6) or twelve(12) piece sets, which include a durable, easy to store, blow molded case.
- 1015 (6 piece set) No. 1017 - .038 straight tip plier No. 1019 - .038 90 degree tip plier No. 1020 - .047 straight tip plier No. 1022 - .047 90 degree tip plier No. 1023 - .070 straight tip plier No. 1025 - .070 90 degree tip plier.



## 1016 Snap Ring Pliers Set

- These snap ring pliers feature fixed tips.
- Pliers are easily converted from external to internal.
- Available in six(6) or twelve(12) piece sets, which include a durable, easy to store, blow molded case.
- 1016 (12 piece set) No. 1017 - .038 straight tip plier No. 1018 - .038 45 degree tip plier No. 1019 - .038 90 degree tip plier No. 1020 - .047 straight tip tip plier No. 1021 - .047 45 degree plier No. 1022 - .047 90 degree tip plier No. 1023 - .070 straight tip plier No. 1024 - .070 45 degree tip plier No. 1025 - .070 90 degree plier No. 1026 - .090 straight tip tip plier No. 1027 - .090 45 degree plier No. 1028 - .090 90 degree tip plier



*Professional Grade*

## 794 Drive Light

- Light easily attaches to any screw driver, ratchet, etc. to light up darkened, tight areas. Can also be used around the house or garage for misc. use.
- Strong LED lights with replaceable battery.
- Patent pending.



## 795 Power Flip Flashlight

- 7 LED bulbs
- Works on 3 AAA batteries
- 3 batteries stored in lower chamber of battery pack allow user to simply turn over the canister to supply fresh batteries
- Extremely useful for techs under a car, on a ladder, or in position where spare batteries are not readily available
- Ideal for storage in glove compartment, boat or closet.
- Since spare batteries are not being used, they are fresh and ready
- Batteries not included
- Patented



## 626 Inside & Outside Caliper

- Stainless steel inside/outside caliper is a quality precision tool.
- Measurements clearly etched in standard and metric gradations.
- Tension spring holds settings.
- Measures outside diameter from 0.0-in. and inside diameter from 3/16-in.
- Slip-slide construction will last for years.



## 119 Magnetic Bit Holder

- 28 bit holder- holds 1/4" and 5/16" bits.
- Magnetic backing attaches to toolbox or other surface for convenience.
- Securely holds bits, bit sizes easily identified.



## 26 18" Professional Windshield Knife

- This heavy duty windshield knife gives that extra reach to cut hardened urethane down to the dash line.
- Constructed of heavy duty steel and aluminum, and a padded ergonomic handle.
- 18-in. overall length.
- No. 356-1 Replacement Blade



## 17 24" Urethane Cut Out Knife

- Windshield tool is composed of rigid aluminum that will not flex.
- Composed of a centered blade, so tool can be used from either side
- The flush, securing screws prevent dash and molding damage.



## 53500 Cold Knife

- Use the cable swivel handle in any position to attack windshield and backlit sealants.
- Stainless steel pull cable has fused end flute and large aluminum handle.



## 55 Body Clip Pliers

- No need to buy 3 sets of trim clip pliers for different applications. This one does it all.
- Very popular item with Paint and Body.
- These specially designed and patented pliers will remove any clip found on trim, bumpers, etc.
- Steel levers enclosed in PMS plastic, prevents scratches
- Tips have a special angle and size that make them the most versatile tool in the clip removal category
- No need to buy 3 sets of trim clip pliers for different applications. This one does it all.
- These clips are found on almost every vehicle, inside and out.
- Patent pending.



## 49500 Body Dent & Seal Puller

- Tool used to pull dented sheet metal back into position.
- Equipped with a 2-1/2lb. slide hammer.
- A 13-in. long shaft enables high pulling force.



## 701 Mini Scraper

- Handy pocket-sized mini-scraper is ideal for detail and body work.
- Scrapes stickers, labels, paint, and more.
- Reversible blade is easily locked in place with thumbscrew for storage.
- Available in an assortment of colors.
- Also available: No.701-30 Merchandiser - 30 piece No.701-50 Merchandiser - 50 piece



## 717 Extended Razor Blade Scraper

- 12-in.(305mm) long, extended reach inspection sticker remover is a must for long sloped windshields.
- Blade clamp is screw tightened to prevent the blade from popping out.
- Includes: One Poly guard blade and two standard single-edge blades inside storage handle.



## 747 Scraper Mate Sticker Remover

- Economical compact scraper is perfect for removing old stickers and paint blotches off windows.
- Extends to 7-7/8-in. when fully opened and locked into position.
- Holder tilts blade to give a better angle for getting into corners.
- Blade folds into handle for safe storage.



## 52600 Scraper Set

Includes our most popular scrapers in one complete set.  
Set Includes: Two Mini Scrapers (701), One Extended Scrapers (717), One Folding Scraper (747)



## 536-700 Mini Razor Knife

- Durable mini razor knife.
- Available individually or 30-packs. ( 536700-30)



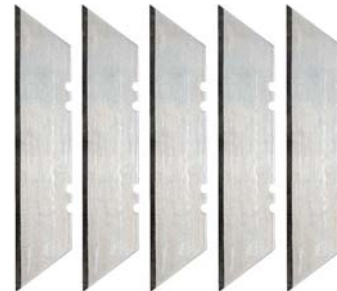
## 536 Monster Knife

- Extra large grip for added control.
- Bi Material Handle for a sure grip
- Replacement Blades Available.
- Equipped with a “Quick Change Blade System”
- Only utility knife you will ever need.
- Replacement Blades 536-1
- Available in 4-pack merchandisers.



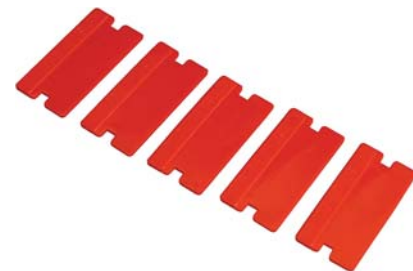
## 527-100 Extra Long Razor Blades

- Extra Long Razor Blade.
- 3 ¾” long blade yields a cutting surface of at least 2 ¼”.
- Sold in a 5 pack of blades in clamshell.



## 709 Poly Guard Blades

- Used to scrape in scratch risk areas.
- Can be used in a number of our scraping tools.
- One hundred (100) to a pack.



## 711 Razor Blades

- Can be used in a number of our scraping tools.
- One hundred (100) to a pack.



## 141 Bolstered Wood Handle Putty Knife / Scraper

- High quality wood handled professional putty knife.
- Stainless steel blade.



## 136 Putty Knife / Scraper Set

- Heavy-duty stainless steel, precision ground and polished. Blades taper at tip to provide great flexibility and blade action. Ergonomic, two-component plastic handles provide a non-slip grip. Packaged in a storage tray. Professional quality set.



## 125 Upholstery Tool Set

- Features high Polish Stainless Steel Blades
- Includes 2 V-Notch and U-Notch tools.
- Includes a Reverse-U Door panel Tool
- Bi-Composite ergonomic handle
- Comes packaged in plastic thermoformed tray
- Available Individually No. 120 "V" Double Step Door Panel Tool No. 121 "U" Clip Panel Tool No. 122 "U" Mini Door Panel Tool No. 123 "V" Mini Door Panel Tool No. 124 Reverse Door Panel Tool



## 53 Upholstery Clip Remover

- Removes upholstery clips in seconds.
- This perfectly balanced alloy forged tool is attached to a comfort grip handle.



## 38 Rear View Mirror Hex Key Set

- This set makes removing and installing rear view mirrors quickly and easy.
- Body hexed for use with wrench when extra torque is needed.
- A must have for the windshield replacement industry.



## 187 Steering Wheel Puller

- This tool is designed to pull steering wheels on all major makes of automobiles.
- 5/8-in. x 4-in. center screw is equipped with a floating swivel to prevent damage to horn wire connections.
- Five sets of side screws provided.



## 498 Flange Type Axle Puller

- This tool can be used as a regular wheel puller or hub puller as well as a flange type puller.
- The bolt circle range is from 4-1/2-in. to 5-1/2-in. which covers all major cars and small trucks with flange type axles.
- The four slots in the adapter allow this tool to be used on either four, five, or six bolt stud designs.
- Has extra heavy 5-1/4-lb. slide hammer



## 31 Pilot Bearing Puller

- When working space is limited, this puller is needed to remove flywheel pilot bearings from automobile, trucks, and tractors.
- Can also be used to pull bushings or bearings from generators or starters.
- Only 7 1/2-in. long.
- Includes 1/2-in. to 1 1/4-in. I.D. capacity jaws.



## 28 Pilot Bearing Puller w/Slide Hammer

- Removes bearings or bushings on flywheel, pump, generator, etc.
- Includes 1/2-in. to 1 3/8-in. (13mm to 32mm) I.D. capacity jaws.
- Includes 3 lb. Slide Hammer





## 189 Harmonic Balancer Puller

- Designed to pull balancers, vibration dampers, pulleys and gears with tapped holes.
- Four slots in yoke allows tool to be used in both two and three hole applications.
- Removable, floating swivel prevents damage to shaft.
- Yoke is forged from high grade alloy steel and heat treated



## 493 Low Profile Seal Puller

- Used to remove most seals, even import seals with limited access.
- Alloy steel, heat treated blade for strength, yet a low profile for tight access.



## 49600 Seal Puller

- This heavy duty seal puller removes metal or rubber, full lip seals.
- Cone adapter is recessed to hold screw and locks screw into place enabling shaft to turn by handle to force screw through seal.
- A 17-in. long shaft enables high pulling force.



## 237, 240, 941, 942, 944 Two-Jaw Pullers

- Designed with forged yokes, heat treated jaws, and plated for years of dependable use.
- Center screws heat treated and finished in black oxide.

Available sizes:

**237** Two-Jaw Puller 2 1/8-in. Adjustable, 3 1/4 -in. spread, Center Screw 3/8 - in. - 24 x 4 3/4 in., 2 Ton

**240** Two-Jaw Puller 3 1/2-in. Adjustable, 4-in. spread, Center Screw 5/16-in. - 24 x 3 7/8 in., 2 Ton

**941** Two-Jaw Puller 3 1/2-in. Reversible, 6-in. spread, Center Screw 9/16-in. - 20 x 6 3/8 in., 5 Ton

**942** Two-Jaw Puller 5 1/2-in. Adjustable, 7-in spread, Center Screw 9/16-in. - 20 x 6 3/8 in., 5 Ton

**943** Two-Jaw Puller 5 1/2-in. Adjustable, 9-in. spread, Center Screw 11/16-in. - 18 x 8 3/8 in., 7 Ton

**944** Two-Jaw Puller 9-in. Reversible, 10-in. spread, Center Screw 11/16-in. - 18 x 8-3/8 in., 7 Ton



## 134, 951, 952, 953, 954 Two & Three Jaw Combination Pullers

These versatile Combination Pullers may be converted into either a 2 or 3 jaw puller simply by changing the jaws on the yoke. All pullers have standard threads, contrasting zinc and black oxide finish. Yoke and jaws are forged. All parts are heat-treated.

Available sizes:

**134** Two & Three Jaw Combination Puller 3 1/2-in. Reach, 4-in. spread, Center screw 3/8 in. - 24 x 4 1/4-in., 2 ton

**951** Two & Three Jaw Combination Puller 3 1/2-in. Reversible, 7 -in. spread, Center Screw 9/16-in. - 20 x 6-3/8-in., 5 Ton

**952** Two & Three Jaw Combination Puller 5 1/2-in. Adjustable, 8-in. spread, Center Screw 9/16-in. - 20 x 6-3/8-in., 5 Ton

**953** Two & Three Jaw Combination Puller 5 1/2-in. Reversible, 10-in. spread, Center Screw 11/16-in. - 1B x 8-3/8-in., 7 Ton

**954** Two & Three Jaw Combination Puller 9-in. Adjustable, 11-in spread, Center Screw 11/16-in. - 18 x 8-3/8-in., 7 Ton



## 764 Exhaust Tail Pipe Cutter

- Thirteen large diameter (19mm) cutting wheels cut deep into exhaust pipes.
- Will Not leave burrs.
- Ideal for heavier walled European-type exhaust pipes.
- Cuts pipe from 3/4-in. to 3-1/4-in. (19mm-83mm) in diameter.
- Only 1/4 turn needed to cut.
- Works well in hard to reach places.



## 780 Exhaust Manifold Socket Set

- Used to start the spring mounted bolts onto the exhaust manifolds of GM vehicles.
- Funnel shape makes installing or removing these difficult assemblies a simple job.
- Patented



## 341-10 Mini-Hex Keys - 10 Pack Merchandiser

- 10 Pack includes 5 SAE and 5 Metric Hex Key Sets.
- Handy small size fits comfortably into pocket to be ready when needed.
- Attaches easily to key chain.
- SAE contains the following sizes: 1/8", 5/32", 3/16", 7/32" 1/4", Flat and Phillips Mini-Screwdrivers.
- Metric contains the following sizes: 2 mm, 3 mm, 4 mm, 5 mm, 6 mm, Flat and Phillips Mini-Screwdrivers.
- Blue and Red anodized bodies.



## 536700-30 Mini Razor Knife - 30 Pack Merchandiser

- Durable mini razor knife.



## 701-30, 701-50 Mini-Scraper Merchandisers

701-30 Mini-Scraper Merchandiser - 30 piece

701-50 Mini-Scraper Merchandiser - 50 piece

- Handy pocket-sized mini-scraper is ideal for detail and body work.
- Scrapes stickers, labels, paint, and more.
- Reversible blade is easily locked in place with thumbscrew for storage.
- Available in an assortment of colors.



## 824 100 Piece Spark Plug Gap Gauge Merchandiser

- Designed with a tapered edge for gauging spark plugs and with a flanged hole to adjust the side wire of plugs with out pressuring center electrode.
- Marked in standard and metric sizes.
- Used to gap all plugs from .020 to .080 (0.6mm to 2.0mm).



## 90620, 90630 Finger Bit Driver Merchandisers

90620 Finger Bit Driver Merchandiser - 20 piece

90630 Finger Bit Driver Merchandiser - 30 piece

- Allows access into tight areas using 1/4" 3/8" sockets.
- Diamond knurl design for positive grip.



## 536-4 Monster Knife 4-Pack Merchandiser

- Extra large grip for added control.
- Bi Material Handle for a sure grip
- Replacement Blades Available.
- Equipped with a "Quick Change Blade System"
- Only utility knife you will ever need.
- Replacement Blades 536-1.
- Includes four Monster Knives.



# Index

17 24" Urethane Cut Out Knife .....	44
19 Stud Remover.....	35
25 2" Round Telescoping Mirror .....	40
26 18" Professional Windshield Knife.....	44
27 Telescoping Inspection Mirror.....	40
28 Pilot Bearing Puller w/Slide Hammer.....	48
31 Pilot Bearing Puller .....	48
38 Rear View Mirror Hex Key Set.....	47
53 Upholstery Clip Remover.....	47
55 Body Clip Pliers .....	44
64 High Energy Ignition Tester .....	23
67 Power On Circuit Tester.....	21
70 Heavy Duty Circuit Tester .....	21
76 Deluxe 12/24 Volt Relay Tester .....	21
100 Master Finger Bit Driver Set .....	37
104-03 Finger Socket Driver 3-Pack .....	37
108 Mini Finger Ratchet .....	37
109 Finger Ratchet (3/8" Drive).....	37
119 Magnetic Bit Holder .....	43
125 Upholstery Tool Set .....	47
134, 951, 952, 953, 954 Two & Three Jaw Combination Pullers.....	50
134 Two & Three Jaw Combination Puller .....	50
135 Ford Radio Remover Tool.....	23
136 Putty Knife / Scraper Set .....	47
141 Bolstered Wood Handle Putty Knife / Scraper.....	47
145 Spark Plug Boot Pliers.....	22
147 Snap Ring Pliers Set .....	42
148 Snap Ring Pliers (Internal) .....	42
149 Snap Ring Pliers (External) .....	42
151 Mini Tubing Cutter .....	30
153 Metric Double Flaring Tool.....	30
154, 161, 164 In-Line Flaring Tool.....	28
154 In-Line Flaring Tool Metric .....	28
155 In Line 4.75mm Bubble Flaring Tool Kit.....	28
156 Bubble / ISO In-Line Tube Flaring Kit.....	28
161 In-Line Flaring Tool Auto-Specific Set.....	28
162 Single Flaring Tool .....	31
163 Double Flaring Tool.....	31
164 In-Line Flaring Tool SAE.....	28
183 Nut Splitter.....	35
186 Pitman Arm Puller.....	14
187 Steering Wheel Puller.....	48
189 Harmonic Balancer Puller.....	49
220-240 Replacement Stone set of 3, 3-in. stones .....	12
226 Adjustable Magnetic Pickup Tool .....	40
230TNZ Fuel Line Disconnect Tools.....	10
237, 240, 941, 942, 944 Two-Jaw Pullers .....	50
237 Two-Jaw Puller .....	50
240 Two-Jaw Puller .....	50

244TNZ Heater Hose Disc 4 Pc Set.....	10
247 One Man Brake Bleeder.....	33
264 Parts Cleaning Brush.....	41
268 Lock Ring & Snap Ring Pliers.....	42
287 Telescoping Magnetic Pickup Tool.....	40
291 Truck & Tractor Oil Filter Pliers.....	24
297, 298 Oil Filter Pliers.....	24
297 Oil Filter Pliers.....	24
298 Oil Filter Pliers.....	24
302 Adjustable Oil Filter Pliers.....	24
324 Replacement Stone medium Grit.....	12
341-10 10 Piece Merchandiser with five SAE and Metric.....	39
341-10 Mini-Hex Keys - 10 Pack Merchandiser.....	52
341-MET Metric Mini-Hex Keys.....	39
341-SAE, 341-MET, 341-10 Mini-Hex Keys.....	39
341-SAE SAE Mini-Hex Keys.....	39
351 All Purpose Awl.....	41
357-1 Replacement Stones.....	32
357-3 Replacement Stones.....	32
357 Disc Brake & Small Engine Hone.....	32
358-1 Replacement Stones.....	32
358 Disc Brake & Caliper Hone.....	32
360 Engine Cylinder Hone, 2"- 7".....	12
361-01 Replacement Stone fine Grit, 400 Grit, Set of three.....	12
361-02 Replacement Stone coarse Grit, 100 Grit, Set of three.....	12
361 Replacement Stone medium Grit, 220-240 Grit, Set of three.....	12
362 Adjustable Brake Cylinder Hone.....	32
363-01 Replacement Stones.....	32
363-02 Replacement Stones.....	32
363 Replacement Stones.....	32
438 Spiral Screw Extractor Set.....	34
441 Fluted Screw Extractor Set.....	34
450 Tight Access Drive Wrench.....	35
482 90 Degree Gearless Angle Drive (1/4").....	38
483 90 Degree Gearless Angle Drive (3/8").....	38
484 1/2" Beaker Bar.....	38
485 45 Degree Gearless Angle Drive (1/4").....	38
486 45 Degree Gearless Angle Drive (3/8").....	38
488 Twin Spin Drive Converter (1/4"- 3/8").....	38
489 Twin Spin Drive Converter (3/8"- 1/2").....	38
493 Low Profile Seal Puller.....	49
498 Flange Type Axle Puller.....	48
503 Bearing Splitter.....	35
510 Coil Spring Compressor.....	15
512 MacPherson Strut Tool.....	16
513 Master MacPherson Strut Tool Set.....	16
526 Flange Type Axle & Front Wheel Hub Puller.....	14
527-100 Extra Long Razor Blades.....	46
536-4 Monster Knife 4-Pack Merchandiser.....	53
536-700 Mini Razor Knife.....	46
536 Monster Knife.....	46
547 Battery Terminal Bolt Pliers.....	20

549 Battery Terminal Clamp Spreader .....	20
551 Battery Post & Clamp Cleaner.....	20
553 Heavy Duty Battery Post & Terminal End Brush.....	20
554 Camo Pac.....	18
555 Camo Pro Pac .....	19
556 Marine.....	18
558 Mini-Jumper.....	19
626 Inside & Outside Caliper.....	43
627 Hook Scribe.....	40
641 Piston Ring Compressor Set .....	12
668 Pistol Grip LED Lighted Screwdriver .....	40
683 Master Disconnect Set .....	10
684 Line Quick Disconnect Tools .....	10
693 Ignition Point Files .....	22
700 Universal Brake Pad Spreader.....	31
701-30, 701-50 Mini-Scraper Merchandisers .....	52
701-30 Mini-Scraper Merchandiser - 30 piece .....	52
701-50 Mini-Scraper Merchandiser - 50 piece .....	52
701 Mini Scraper .....	45
702 Disc Brake Pad Spreader.....	31
709 Poly Guard Blades.....	46
711 Razor Blades .....	46
717 Extended Razor Blade Scraper.....	45
722 Disc Brake Piston Remover.....	33
731 Flexible Hose Clamp Pliers .....	11
734 The Grabber Serpentine Belt Tool .....	13
735 Euro Stretch Belt Installation Tool.....	13
736 Stretch Belt Installation Tool .....	13
737 Flexible Hose Pinch-Off Pliers.....	11
747 Scraper Mate Sticker Remover .....	45
750 22 Piece Alternator Pulley Service Kit .....	9
753 13 Piece Alternator Pulley Service Kit.....	8
758 Heavy Duty Tubing Bender.....	31
762 Sub Compact Brake Cylinder Hone.....	32
763 Replacement Stones .....	32
764 Exhaust Tail Pipe Cutter .....	51
767 Ratcheting Tubing / PVC Cutter .....	41
768 Grinding & Lapping Compound .....	11
780 Exhaust Manifold Socket Set.....	51
784ALUM, 786ALUM Aluminum Diecast Filter Wrenches.....	25
784ALUM Aluminum Diecast Filter Wrench .....	25
785, 788, 789, 791 Cup Type Oil Filter Wrenches.....	25
785 Cup Type Oil Filter Wrench .....	25
786ALUM Aluminum Diecast Filter Wrench 3" Cap Wrench .....	25
788 Cup Type Oil Filter Wrench .....	25
789 Cup Type Oil Filter Wrench .....	25
791 Cup Type Oil Filter Wrench .....	25
794 Drive Light .....	43
795 Power Flip Flashlight .....	43
803 Deluxe Strap Oil Filter Wrench.....	27
805 Magnetic Wheel Weight Tool .....	17
814 All Size Oil Filter Wrench .....	27



824 100 Piece Spark Plug Gap Gauge Merchandiser .....	52
825 Spark Plug Gap Gauge .....	22
843 Oxygen Sensor Wrench .....	6
855 Brake Bleeder Tank .....	33
878 Ratcheting Chain Wrench.....	41
880 Cylinder Head Rethreader Kit.....	7
881SET Speed Stick Set.....	41
888, 889 Spark Plug Speed Stick.....	12
888 Spark Plug Speed Stick 5/8-in. socket .....	12
889 Spark Plug Speed Stick 13/16-in. socket .....	12
891, 892, 893 Heavy Duty Truck Oil Filter Wrenches.....	26
891 Heavy Duty Truck Oil Filter Wrench .....	26
892 Heavy Duty Truck Oil Filter Wrench .....	26
893 Heavy Duty Truck Oil Filter Wrench .....	26
906 Finger Bit Driver.....	37
912 Extra Long Torx Screwdriver Set.....	36
913 Tamper Resistant Square Drive Torx Bit Set .....	36
914 Tamper Resistant Square Drive Torx Bit Set .....	36
917 Tamper-Proof Extra Long Torx Screwdriver Set.....	36
920 Torx Socket Sets.....	36
932 Torx Socket Set w/ Holder (Internal).....	36
933 Master Torx Bit Set .....	37
941 Two-Jaw Puller .....	50
942 Two-Jaw Puller .....	50
943 Two-Jaw Puller .....	50
944 Two-Jaw Puller .....	50
946 Inner Tie Rod Removal Tool .....	15
951 Two & Three Jaw Combination Puller .....	50
952 Two & Three Jaw Combination Puller .....	50
953 Two & Three Jaw Combination Puller .....	50
954 Two & Three Jaw Combination Puller .....	50
967 4-In-1 Swivel Oil Filter Wrench.....	26
987 Heavy Duty Three Legged Oil Filter Wrench.....	27
988 Three Legged Oil Filter Wrench .....	27
989, 991 Swivel Truck Oil Filter Wrench.....	26
989 Swivel Truck Oil Filter Wrench.....	26
991 XL Swivel Truck Oil Filter Wrench .....	26
993, 994, 995, 999 Swivel Oil Filter Wrenches.....	26
993 Swivel Oil Filter Wrench .....	26
994 Swivel Oil Filter Wrench .....	26
995 Swivel Oil Filter Wrench .....	26
999 Swivel Oil Filter Wrench .....	26
1015 Snap Ring Pliers Set .....	42
1016 Snap Ring Pliers Set .....	42
16000 Radiator Hose Pinch Off Pliers.....	11
16500 Heavy Duty Pinch Off Pliers .....	11
25200 Ford Fuel Filter Wrench.....	27
27100 Brake Shoe Spreader.....	31
30900 Brake Spring Tool .....	33
32300 Adjustable Cylinder Hone Deglazer, 2"- 5" .....	12
32900 Master Cylinder Brake Bleeder.....	33
36700 Two-In-One S-Cam Brake Tool.....	30

38800 Harmonic Balancer Installer .....	6
38900 Ford Triton Spark Plug Thread Repair Kit .....	6
39100 Ford Triton Spark Plug Extractor .....	6
39200 Ford Triton Spark Plug Porcelain Extractor .....	7
39300 Three Valve Ford Triton Insert Kit.....	7
48100 Master Ratchet Accessory Set .....	38
49500 Body Dent & Seal Puller .....	44
49600 Seal Puller .....	49
52300 Seal Puller .....	13
52600 Scraper Set.....	45
53500 Cold Knife .....	44
81000 Hinge Pin Puller.....	39
82700 Metric Bubble Flaring Tool Kit.....	30
82800 Tube Service Kit .....	29
82900 Double & Bubble Flare Tool.....	29
90100 Hub Tool .....	17
90200 Master Spring Compressor Set .....	17
90620, 90630 Finger Bit Driver Merchandisers .....	53
90620 Finger Bit Driver Merchandiser - 20 piece .....	53
90630 Finger Bit Driver Merchandiser - 30 piece .....	53
91000 Coil Spring Clamps.....	16
91800 Rear Bearing Puller .....	15
94800 Hub Puller.....	14
95200, 95300, 95400 In-Line Dowel Pin Puller .....	34
95200 In-Line Dowel Pin Puller SAE.....	34
95300 In-Line Dowel Pin Puller Metric .....	34
95400 In-Line Dowel Pin Puller Master Set.....	34
536700-30 Mini Razor Knife - 30 Pack Merchandiser .....	52





## **A Leader in Specialty Hand Tool Design and Manufacturing**

For over 65 years, professional mechanics and do-it-yourselfers have depended on the quality and innovation of Cal-Van Specialty Tools. At Cal-Van Tools we are focusing on what today's technician needs to complete jobs easier and faster. Our goal is to have our innovation drive your profits. Please contact us with any comments or questions you may have.

Phone: 800-537-1077

Fax: 800-537-1717

Email: [info@cal-vantools.com](mailto:info@cal-vantools.com)

Web: [www.cal-vantools.com](http://www.cal-vantools.com)

YouTube: <http://www.youtube.com/user/calvantools>

Facebook: [www.facebook.com/calvantools](http://www.facebook.com/calvantools)

Twitter: [www.twitter.com/calvantools](http://www.twitter.com/calvantools)

### **WARRANTY POLICY**

Cal-Van Tools are engineered and manufactured to the highest quality standards. Most tools are backed by a Limited Lifetime Warranty which guarantees tools from manufacturing and material defects. Any tool which fails to perform under normal use can be returned to the point of purchase for warranty. It is Cal-Van Tools' option to replace or repair any tool found defective in workmanship or material.

This warranty does not apply to tools that are worn beyond their serviceable life, abused, altered or misused in any way. This warranty does not apply to wearable items, including, but not limited to: hone stones, razor blades, bulbs, files, snap rings, dies, re-threaders, drills or cutting tools.

This warranty gives you specific legal rights and you may also have other rights which vary from state to state.